



# Thai Labour Market Journal

Vol No.32 Issue No.5 May, 2024



Labour Demand  
(April 2024) 75,401 vacancies

Thai workers working overseas  
had increased by 6.00% (YoY)

Employed persons 39.09 million  
Unemployed persons 0.436 million

The insured persons who registered  
unemployment via DOE were 84,401  
persons.

## CONTENTS

- 1 Labour Demand (DOE)
- 2 Labour Emigration
- 3 Demand for Thai workers employed overseas (Agencies)
- 4 Labour Immigration
- 5 Labour Force
- 6 Registration of Unemployment Insures

## Editorial

In April 2024, Thai labour market had 39.09 million employed, 4.36 hundred thousand unemployed, and 84,401 insured individuals registered as unemployed with the DOE. The primary cause of unemployment was resignation (83.05%). Employers reported 75,401 job vacancies through the DOE, Thai workers overseas increased by 6.00%, while foreign workers in Thailand increased by 21.18%.

Please follow the further information at  
Website : <https://www.doe.go.th/prd/lmia>

# 1. Labour Demand : Labour Requirement via DOE



In April 2024, employers/companies reported their labour requirement via DOE about 75,401 job vacancies. The highest demand was 29,617 vacancies at the vocational level and diploma (39.28%), followed by 24,412 vacancies at the secondary level (32.38%), 12,716 vacancies at the bachelor's degree and higher (16.86%) and 8,656 vacancies at the primary level and lower (11.48%).



## Labour demand classified by economic sectors

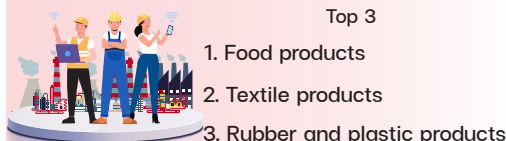
### Agriculture Sector

## 1,604 vacancies



### Manufacturing Sector

## 30,151 vacancies

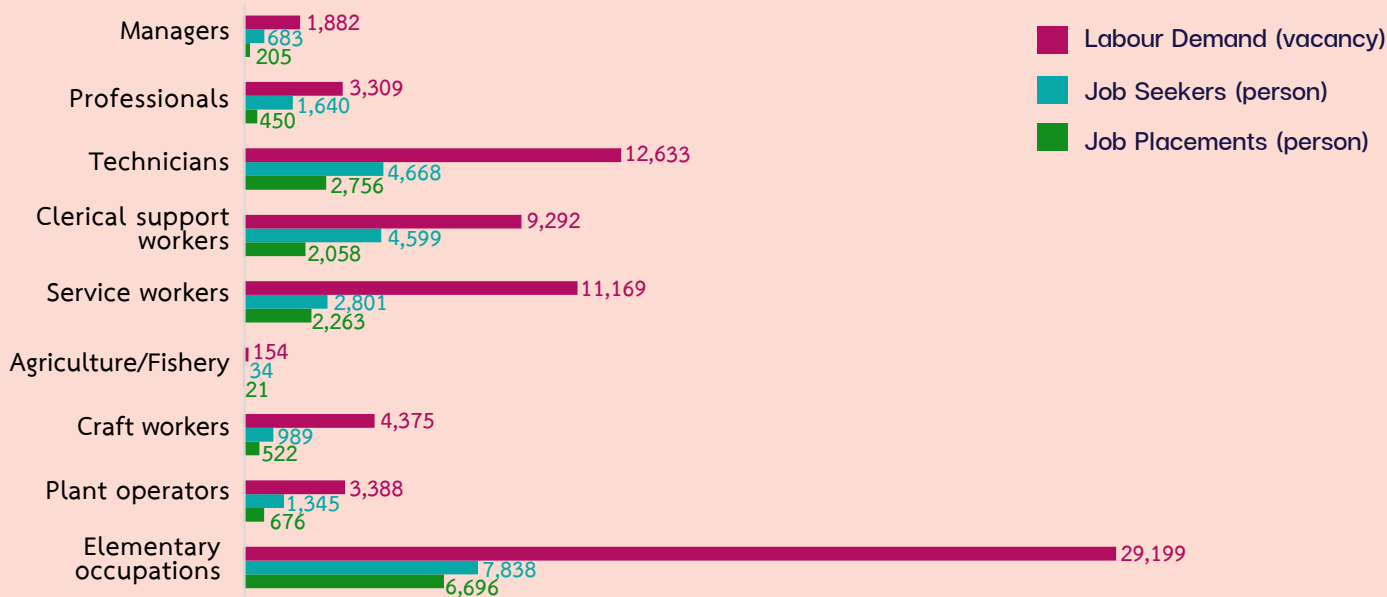


### Service/Trade Sector

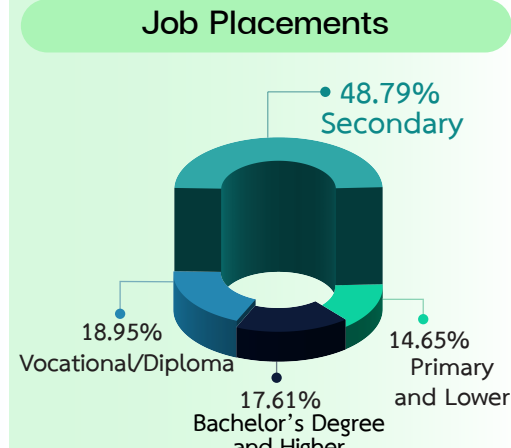
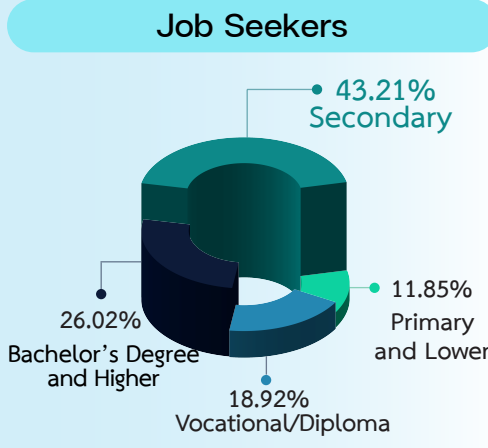
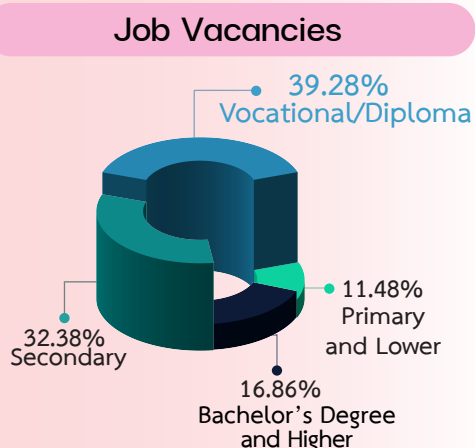
## 43,646 vacancies



## Job Vacancies, Job Seekers and Job Placements classified by occupation groups



## Job Vacancies, Job Seekers and Job Placements classified by education levels



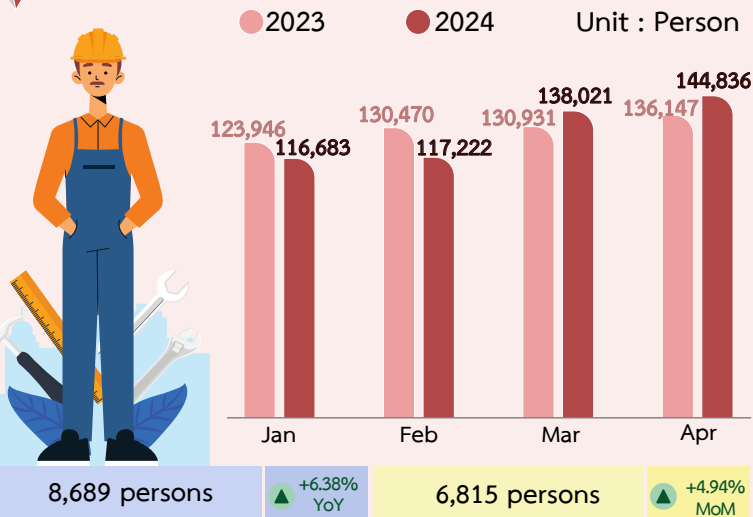
Source : DOE Data Center

# 2. Labour Emigration : Thai workers working overseas

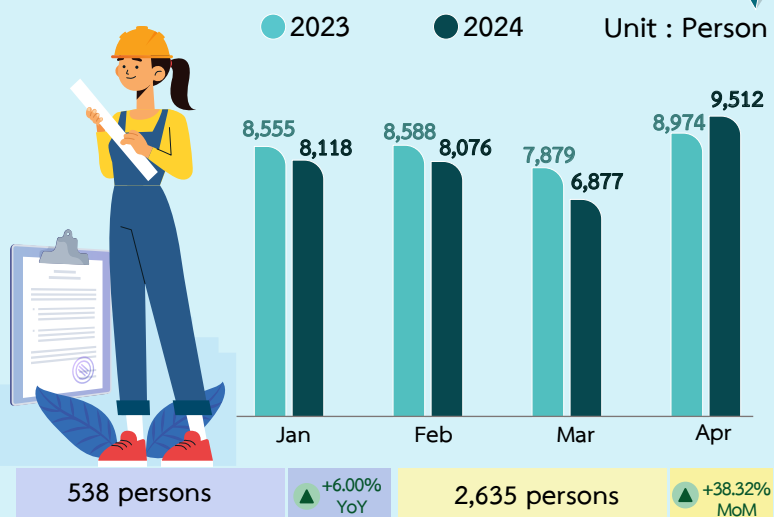
In April 2024, 144,836 Thai workers were employed overseas. The top three destination countries were Taiwan, Republic of Korea, and Japan. The most in-demand jobs were elementary occupations, including agricultural, general industrial, and metal product manufacturing labourers.

There were 9,512 job seekers permitted to go overseas for employment, with 4,894 job seekers classified into five channels of overseas employment. Among them, the arrangement of agencies had the highest number with 3,008 persons (31.62%), and re-entry permits for work had 4,618 persons (48.55%). The top three job fields were factory workers, plant and machine operators and assembly workers, with 3,113 persons (32.73%).

## Stock of Thai workers employed overseas



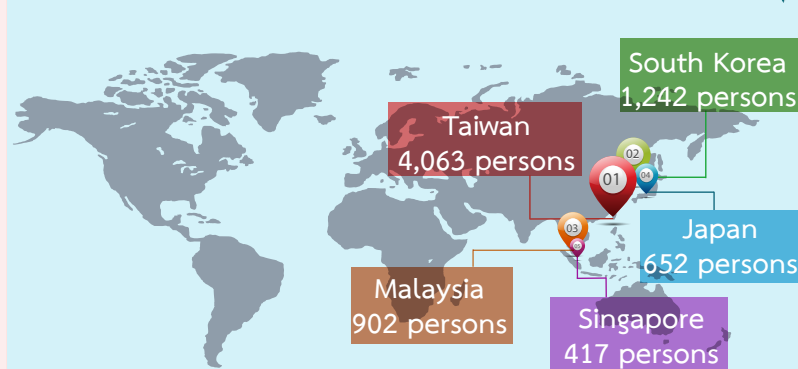
## Permission for working overseas



## Top five countries by stock of Thai workers employed overseas

	1. Taiwan	58,555 persons
	2. Republic of Korea	22,556 persons
	3. Japan	16,863 persons
	4. Israel	13,746 persons
	5. Malaysia	5,880 persons

## Top five countries by flow of Thai workers employed overseas



## Classified by continents

### Asia

1. Taiwan
2. Republic of Korea
3. Japan
4. Malaysia
5. Singapore

### Middle East

1. Israel
2. UAE
3. Kuwait
4. Bahrain
5. Qatar

### Europe

1. Portugal
2. Hungary
3. Russia
4. Poland
5. Ireland

### North & South America

1. Canada
2. USA
3. Greenland
4. Panama
5. Paraguay

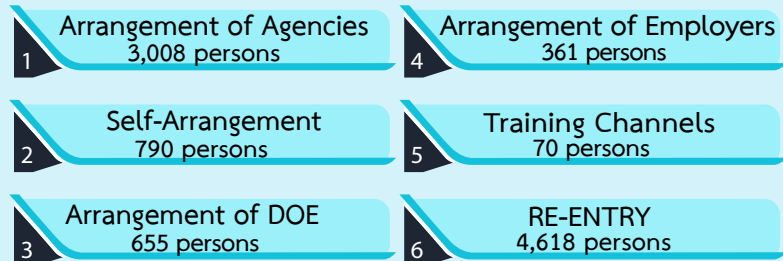
### Africa

1. South Sudan
2. Mozambique
3. South Africa
4. Madagascar
5. Nigeria

### Australia & Oceania

1. New Zealand
2. Australia
3. Papua New Guinea
4. Republic of the Marshall
5. French Polynesia

## Classified by channels of overseas employment



## Classified by classification of occupations



Source : Overseas Employment Administration Division

### 3. Demand for Thai workers employed overseas through agencies



In April 2024, employers/companies reported a total demand of 467 Thai workers employed overseas through agencies. Of these, 145 were male (31.05%), 181 were female (38.76%), and gender was not specified for 141 persons (30.19%). The most in-demand job was housekeepers with 150 persons (32.12%), followed by welders with 100 persons (21.41%) and drivers with 100 persons (21.41%). The countries that were in-demand for Thai workers included 250 persons (53.53%) going to Saudi Arabia, 100 persons (31.41%) to Australia, and 40 persons (8.57%) to Taiwan.

#### Top five occupations in-demand for Thai workers

1. Housekeeper  
150 persons



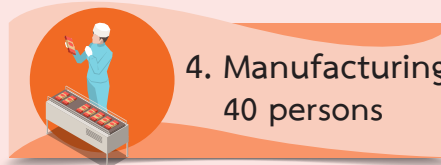
2. Welder  
100 persons



3. Driver  
100 persons



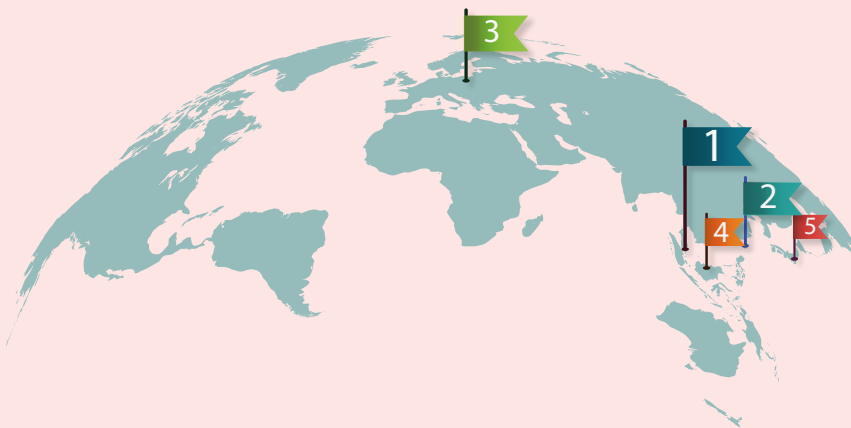
4. Manufacturing  
40 persons



5. Assistant housekeeper  
20 persons



#### Top five countries in-demand for Thai workers



1		Saudi Arabia	250 persons
2		Australia	100 persons
3		Taiwan	40 persons
4		Macau	32 persons
5		Japan	25 persons

#### Top occupations in-demand for Thai workers

##### Middle east 250 persons

1. Housekeeper
2. Driver



##### Asia 117 persons

1. Manufacturing
2. Assistant housekeeper
3. Waiter/waitress
4. Agricultural worker
5. Painter



##### Australia 100 persons

Welder



#### Top five industries in-demand for Thai workers

Service 256 persons

Construction 104 persons

Metal Production 40 persons

Hotel and resort 32 persons

Personal service 20 persons



Source : Overseas Employment Administration Division

# 4. Labour Immigration : Foreign Workers

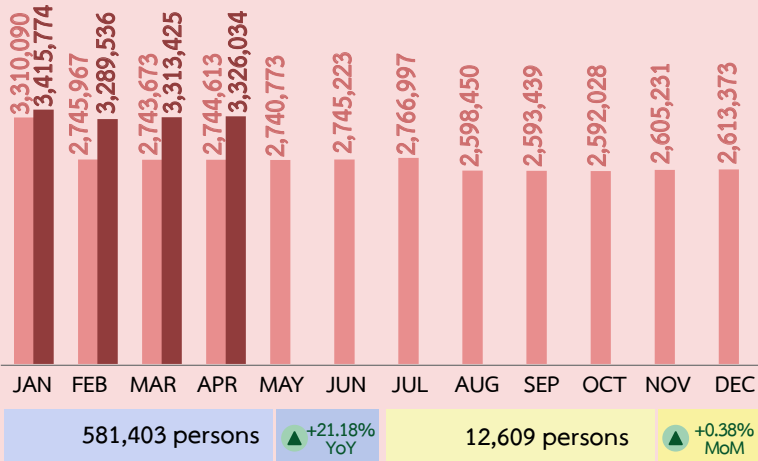


As of April 2024, there were 3,326,034 foreign workers in Thailand, consisting of 3,056,465 general workers (Myanmar, Laotian, Cambodian and Vietnamese) (91.90%), 179,114 skilled foreign workers (5.39%), and 90,455 minorities/lifetime worker permits (2.72%).

In April 2024, 56,067 new foreign workers were permitted to work, classified as: 40,445 positions of MOU (72.14%), 5,790 positions of General type (10.33%), 6,498 positions of Daily or Seasonal workers (11.59%), 1,779 positions of Minorities group (3.17%) and 1,555 positions of BOI (2.77%).

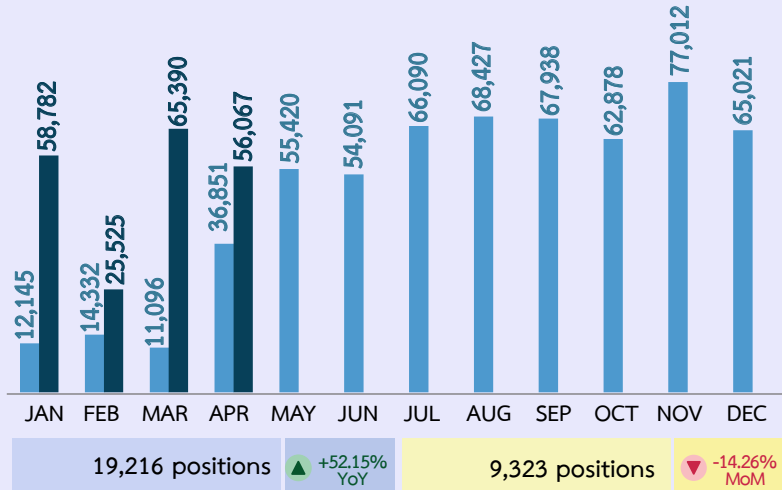
## Stock of foreign workers

● 2023 ● 2024 Unit : Person

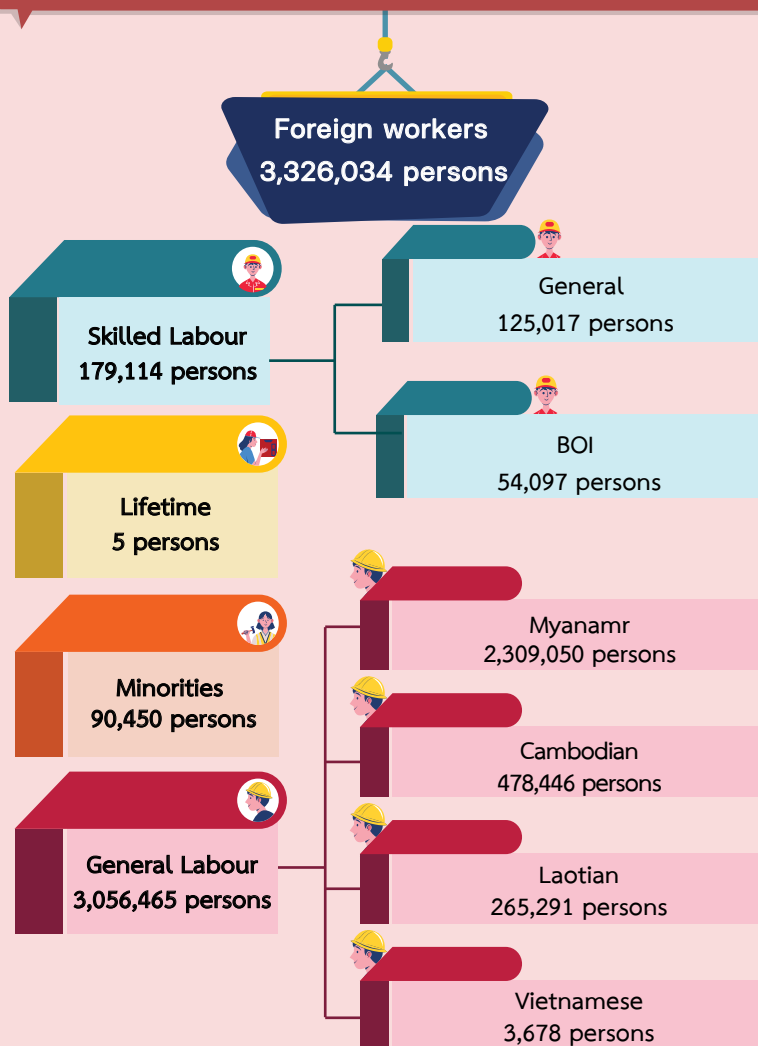


## Flow of foreign workers

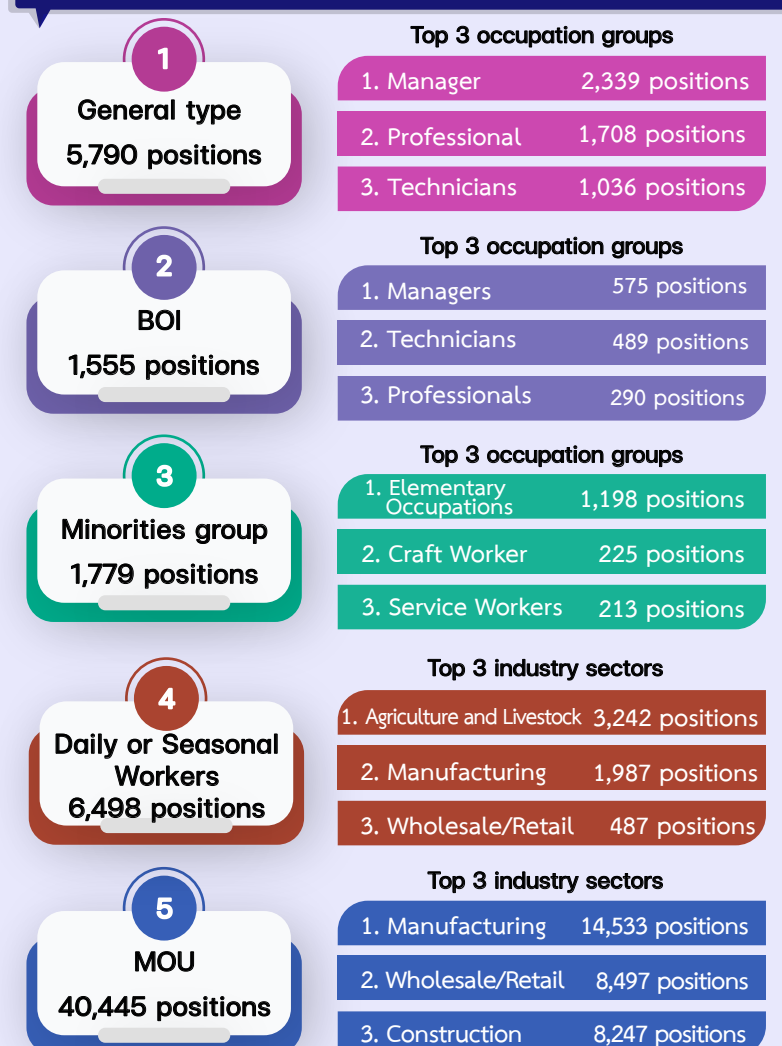
● 2023 ● 2024 Unit : Position



## Stock of foreign workers by groups



## Flow of foreign workers by types



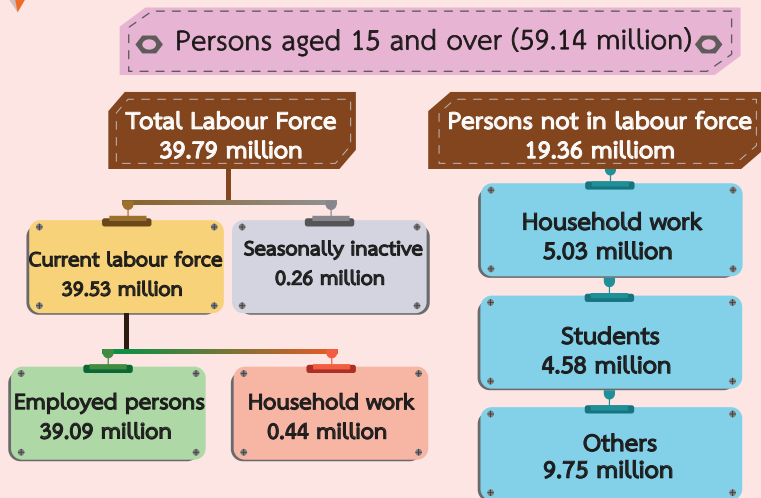
Source: Foreign Workers Administration Office

# 5. Labour Force : Thai Labour Force Survey

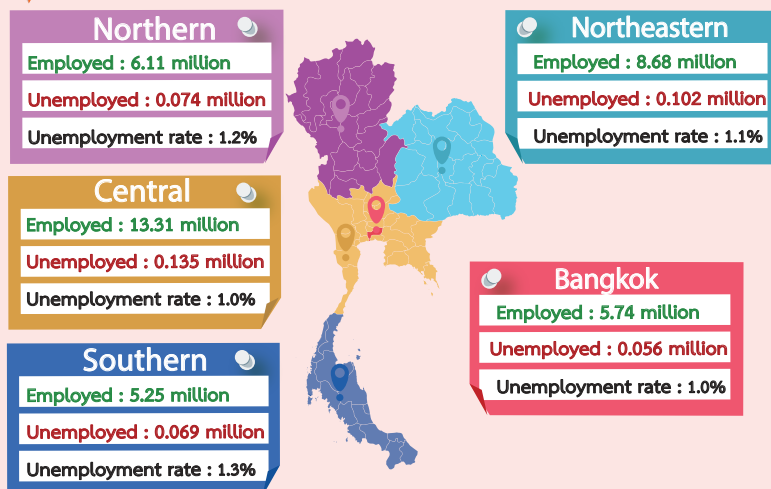


According to the National Statistical Office survey in April 2024, there were 59.14 million persons aged 15 and over. Among these, 39.79 million persons were in the labour force, with 39.09 million persons employed, 4.36 hundred thousand persons unemployed (1.1% unemployment rate), and 2.62 hundred thousand were seasonally inactive labour force.

## Population structure (April, 2024)



## Employed and Unemployed Persons classified by Regions



## Employed Persons (39.09 million)

Apr 2023	: 39.28 million	-0.48% YoY
Mar 2024	: 39.79 million	-1.76% MoM

## Unemployed Persons (0.436 million)

Unemployment rate 1.1%

Apr 2023	: 0.413 million	+5.57% YoY
Mar 2024	: 0.397 million	+9.82% MoM

Agriculture 10.10 million

Non-Agriculture 28.99 million

## Top 6 Non-Agriculture (Unit : million persons)



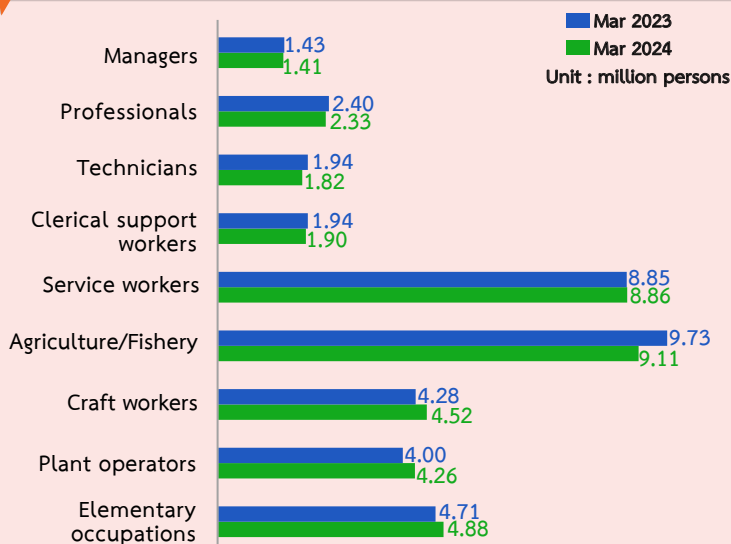
Without work experience 0.235 million

Having work experiences 0.201 million

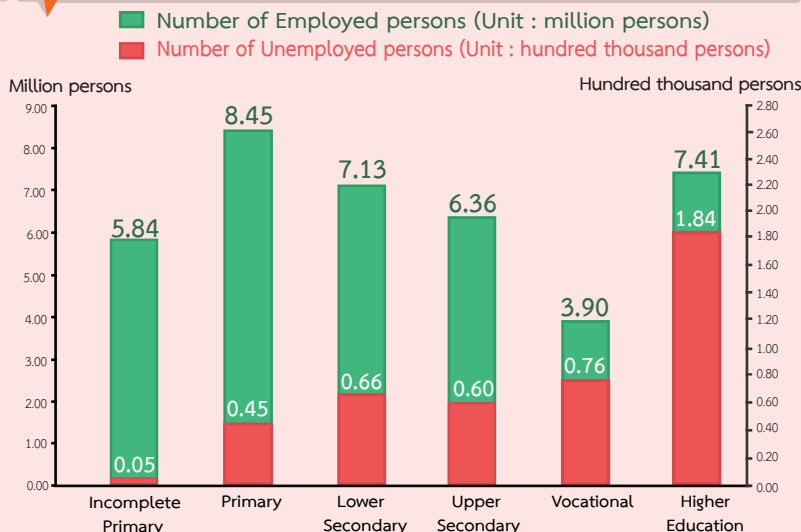


\*Including other education and unknown level of education.

## Employed persons by occupation groups



## Education levels



Source : National Statistical Office

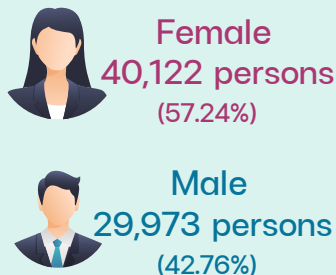
# 6. Registration of Unemployment Insurers



In April 2024, there were 84,401 registered insured persons from unemployment via the DOE. This number had decreased from the previous year by 766 persons (0.90%). The group consisted of 37,188 males (44.06%) and 47,213 females (55.94%). The majority resigned (83.05%), with reasons including changing jobs, self-employment, respite, or due to sickness.

## The Registered Persons in April 2024 (84,401 persons)

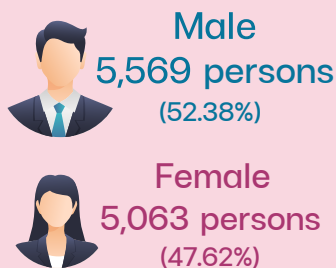
**Resignation**  
70,095 persons  
(83.05%)



### Causes of resignation

1.	Changing jobs	36,578 persons
2.	Self-employment	20,084 persons
3.	Respite	7,920 persons
4.	Sickness	5,513 persons

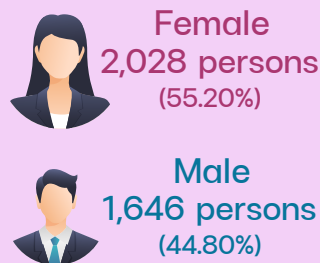
**Dismissal**  
10,632 persons  
(12.60%)



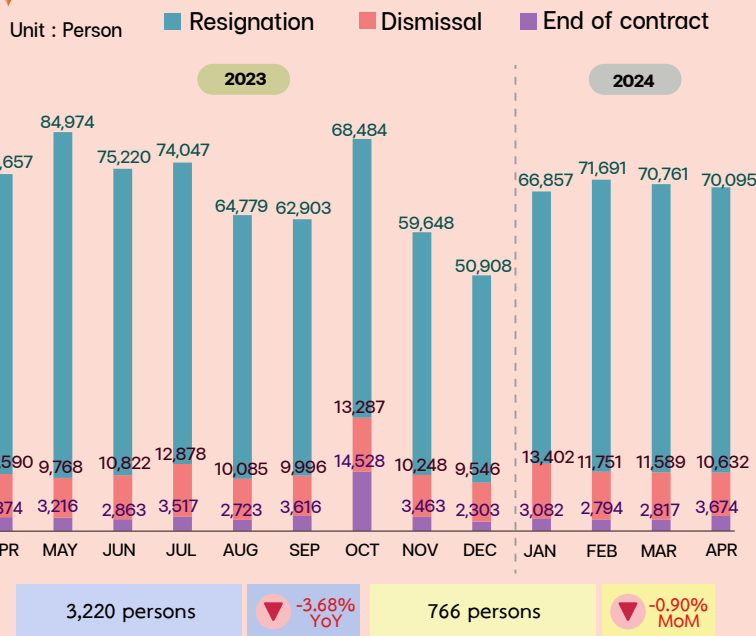
### Causes of dismissal

1.	Staff reduction	4,890 persons
2.	Termination of contract	4,076 persons
3.	Out of business	1,666 persons

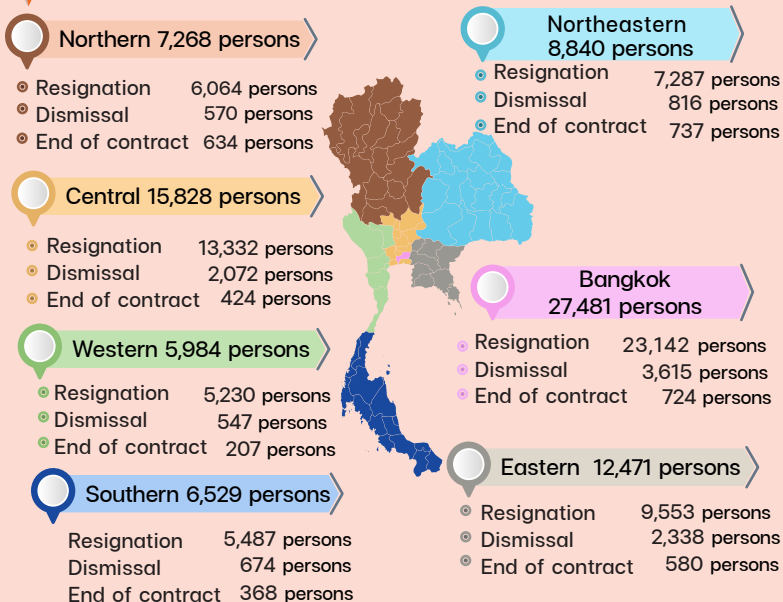
**End of contract**  
3,674 persons  
(4.35%)



### The number of insured persons in case of unemployment monthly from 2023-2024



### The number of insured persons in case of unemployment, classified by regions



Source : DOE Data Center, Department of Employment, Ministry of Labour

# Thai Labour Market Journal Feedback



SCAN

CLICK

แบบสอบถามความพึงพอใจต่อวารสาร  
สถานการณ์ตลาดแรงงานรายเดือน

กรมการจัดหางาน โดยกองบริหารข้อมูลตลาดแรงงานขอความร่วมมือนำข้อมูลแบบสอบถาม ความพึงพอใจในการติดตามและปรับปรุงการให้บริการข้อมูลข่าวสารตลาดแรงงานของกรมการจัดหางาน เพื่อให้ตรงกับความต้องการของท่าน

คลิกเพื่อดู Google Maps ถึงที่ทำการใน Google Maps

\*จำเป็น

ตอนที่ 1 สถานภาพทั่วไปของผู้ตอบแบบสอบถาม

1.1) ประเภทหน่วยงานของผู้บริหารข้อมูลข่าวสารตลาดแรงงาน \*

- 1) สถานศึกษา
- 2) หน่วยงานราชการ
- 3) สถานประกอบการจังหวัด
- 4) หน่วยงานเอกชน
- 5) สถานอุตสาหกรรมจังหวัด
- อื่นๆ \_\_\_\_\_

ระบุชื่อหน่วยงาน \*

ตำแหน่งของคุณ \_\_\_\_\_

ตอนที่ 2 ความคิดเห็นเกี่ยวกับการผลิตและเผยแพร่วารสารสถานการณ์ตลาดแรงงานรายเดือน

2.1 ท่านเห็นว่าการวารสารสถานการณ์ตลาดแรงงาน สามารถนำไปประโยชน์ต่อท่านหรือหน่วยงานของท่านมากน้อยเพียงใด

@LMl of Thailand

Thai Labour Market Information

<https://www.doe.go.th/prd/lmia>

0 2246 7870 [lmiofthailand@doe.go.th](mailto:lmiofthailand@doe.go.th)

Labour Market Information Administration Division,  
Department of Employment  
Mitmairi Road, Din Daeng District,  
Bangkok 10400

## Organizers

### Consultants

Somchai Morakotsriwan

Sipmuenchai Pothisin

Mongkol Songkram

Wichit Intharajaroen

### Authors

Thanaporn Suwanno

Kiattisak Thanala

Piyanooch Buapen

Nuttanun Rojanaprapop

Nadsitang Phawadee

Kornrawit Mitkaew

Ampawan Chaona

Saroat Phungneat

Thitima Ninpunk

### Translator

Wasuthorn Phurieksuwan

Director-General, Department of Employment

Deputy Director-General, Department of Employment

Deputy Director-General, Department of Employment

Deputy Director-General, Department of Employment

Director, Labour Market Information Administration Division

Labour Specialist, Senior Professional Level

Labour Specialist, Professional Level

Labour Specialist, Professional Level

Labour Specialist, Practitioner Level

Statistician

Labour Specialist

Labour Specialist

Labour Specialist

Labour Specialist, Practitioner Level



Labour Market Information Administration Division