



- ➔ 37.66 million employed persons, a decrease of 2.1 hundred thousand persons compared to the same period last year.
- ➔ 3.67 hundred thousand unemployed persons, an increase of 0.18 hundred thousand persons compared to the same period last year.
- ➔ 21,979 Job Vacancies are available in Thailand.

CONTENTS

- 1 Labour Force
- 2 Labour Demand
- 3 Labour Emigration
- 4 Labour Immigration

Editor

Director : Director of Labour Market Information
Administration Division

Writers : Analysis and Research Group

Translators : Labour Market Administrative Record Center

Editorial

Thai Labour Market situation as of December 2019 according to DOE statistic, there are 21,979 job vacancies, increased by 3.56% from the previous month. The statistic of employed persons is 37.66 million persons decreased by 0.56% and unemployed persons is 3.67 hundred thousand, increased by 5.16% compared to the same period last year. Unemployment rate is 1.0%

Please follow the further information at <https://doe.go.th/lmia> or Facebook at Thai Labour Market Information.



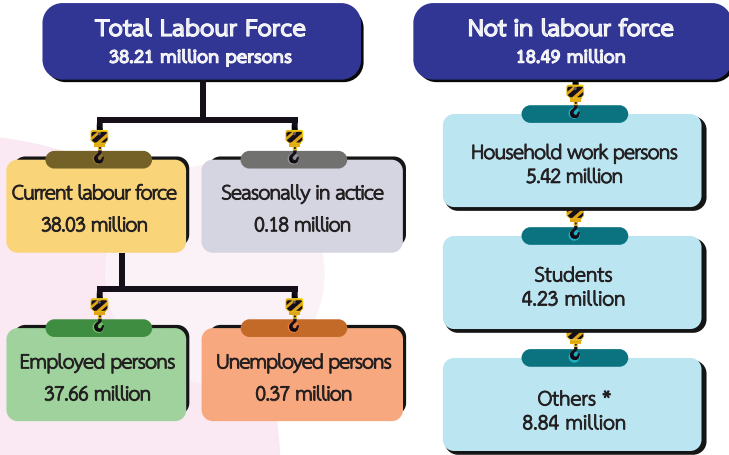
<https://doe.go.th/lmia>

Labour Force : Thai Labour Force Survey

Statistic of the National Statistical Office as of December 2019 shows that the country's total population 56.70 million are aged 15 and over, of these 38.21 million are in labour force, 37.66 million are employed and 0.367 million are unemployed (unemployment rate of 1.0%) and 0.179 million are seasonally inactive labour force.

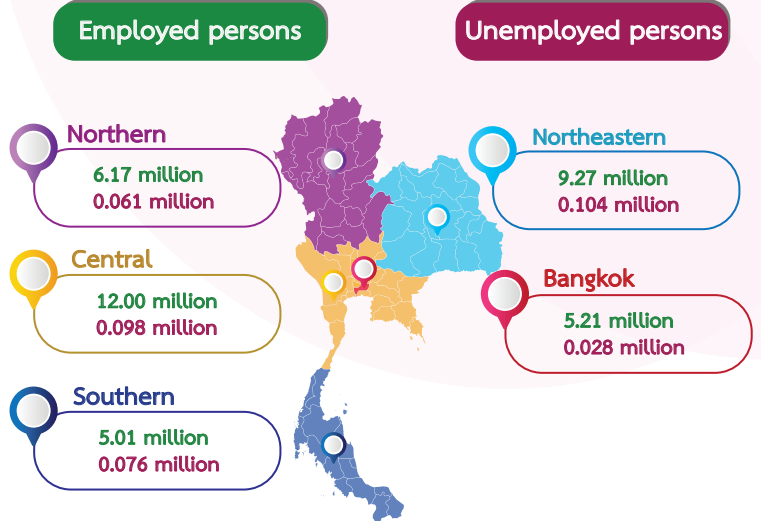
Number of Population by labour force (December 2019)

Aged 15 and over 56.70 million persons



* (Children, Elderly, Disability etc.)

Employed and Unemployed persons by region



Employed persons 37.66 million, decrease by 0.21 million

December 2018 : 37.87 million persons
December 2019 : 37.66 million persons

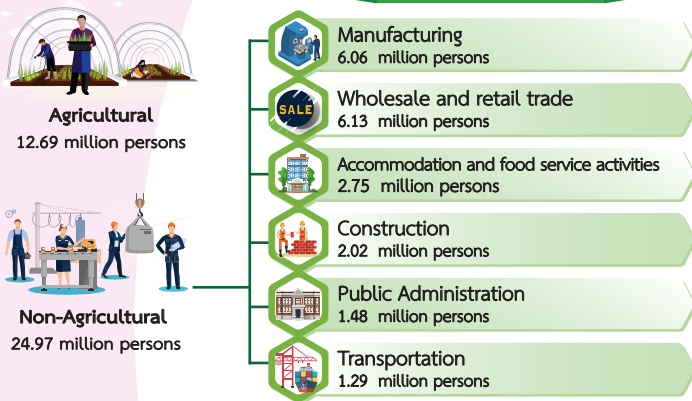


Unemployed persons 0.367 million, (1.0% of unemployment rate)

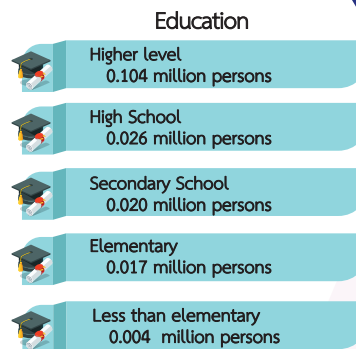
December 2018 : 0.349 million persons
December 2019 : 0.367 million persons



Top 6 Industries



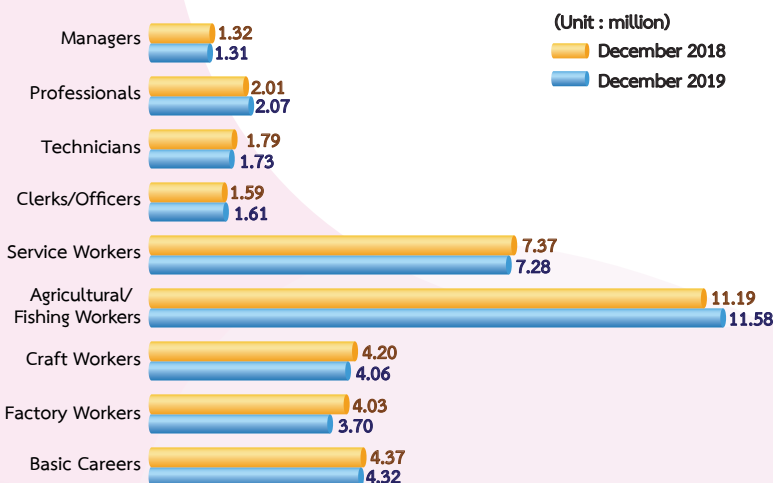
Without working experiences
0.172 million persons



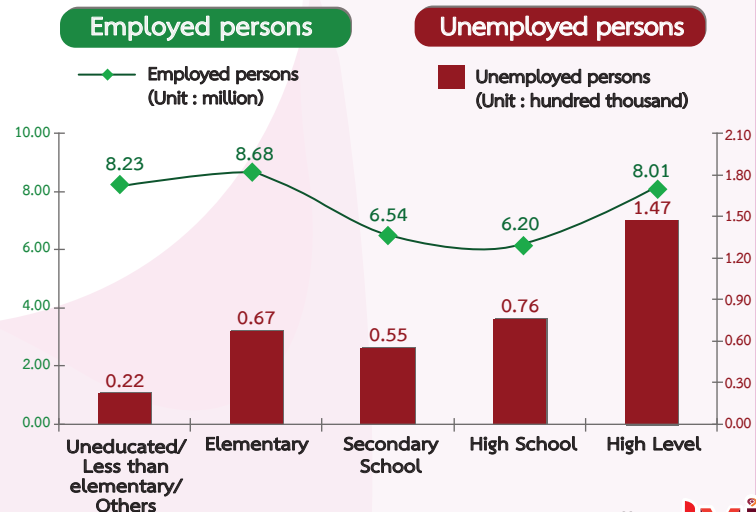
Having working experiences
0.195 million persons



Employed persons by occupational group



Education

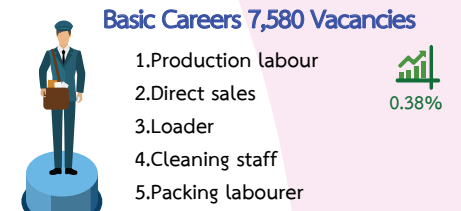
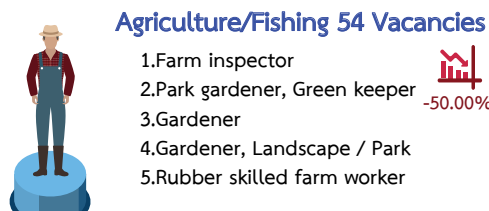
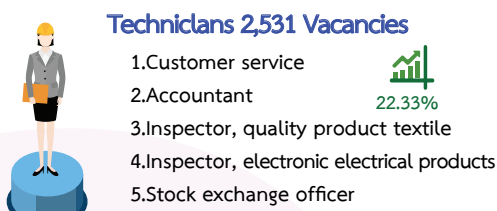
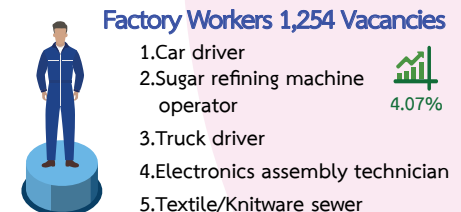
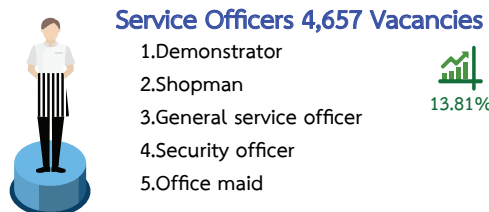
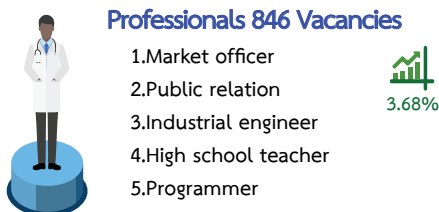
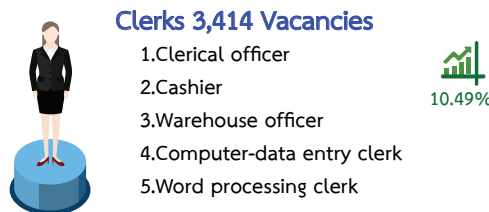


Source : National Statistical Office

In December 2019, there are 21,979 Job vacancies from 303 companies requested through the recruitment service of Department of Employment (DOE). The highest demand is 7,705 persons (35.06%) in Secondary School level followed by 7,681 persons (34.95%) in Vocational degree and 3,674 persons (16.72%) in Primary School level and the lowest demand is 2,919 persons (13.28%) in Post Graduate level.



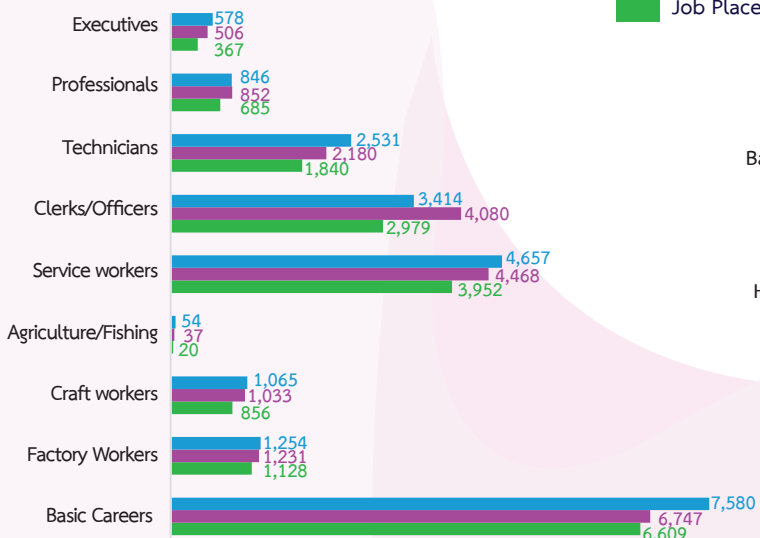
Top 5 job vacancies among occupation groups



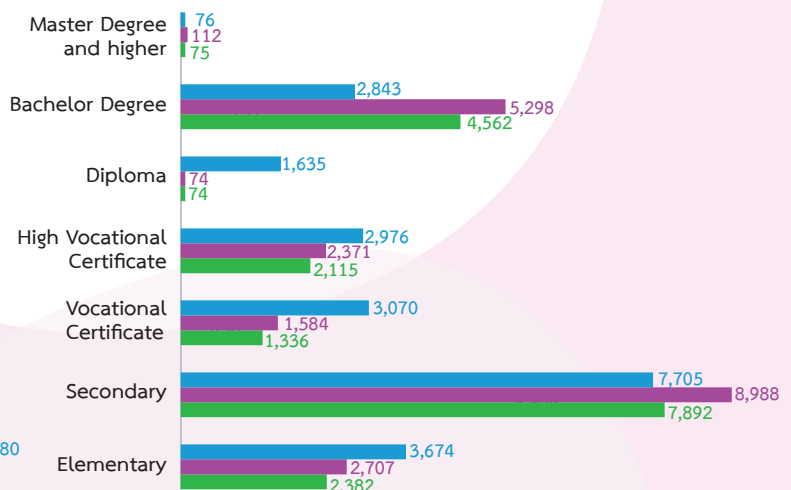
Remark : These are the increase of decrease of labour demand in various groups compared with the previous month.

Job Vacancies, Job Seekers and Job Placements

Classification by Job



Classification by Education

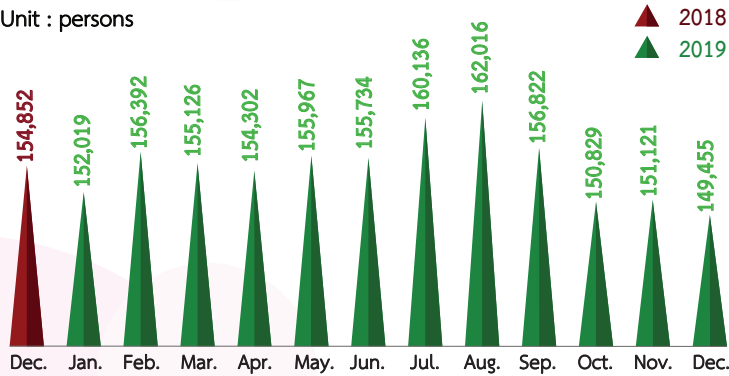


Labour Emigration : Thai workers working oversea

In December 2019, there are 149,455 Thai workers working oversea. The top 3 countries of destination are Taiwan, Israel and Korea and the most required jobs are Labourers, Production Labours and Agricultural workers.

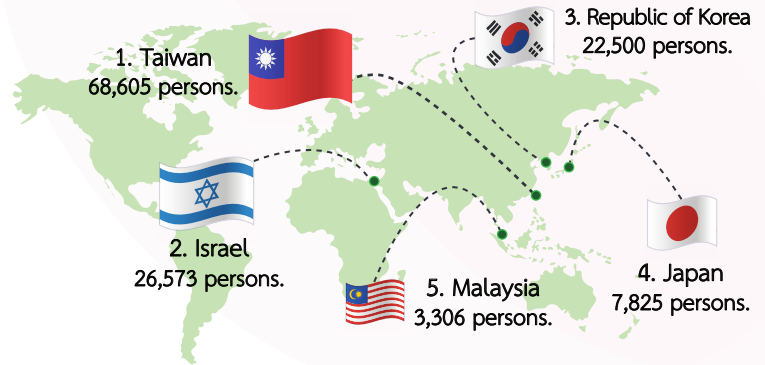
Thai workers working oversea

Unit : persons



December 2018 : 154,852 persons.
 December 2019 : 149,455 persons. -3.49%

Top 5 Countries of Destination



November 2019 : 151,121 persons.
 December 2019 : 149,455 persons. -1.10%

Top 5 Countries of Destination in various Continents

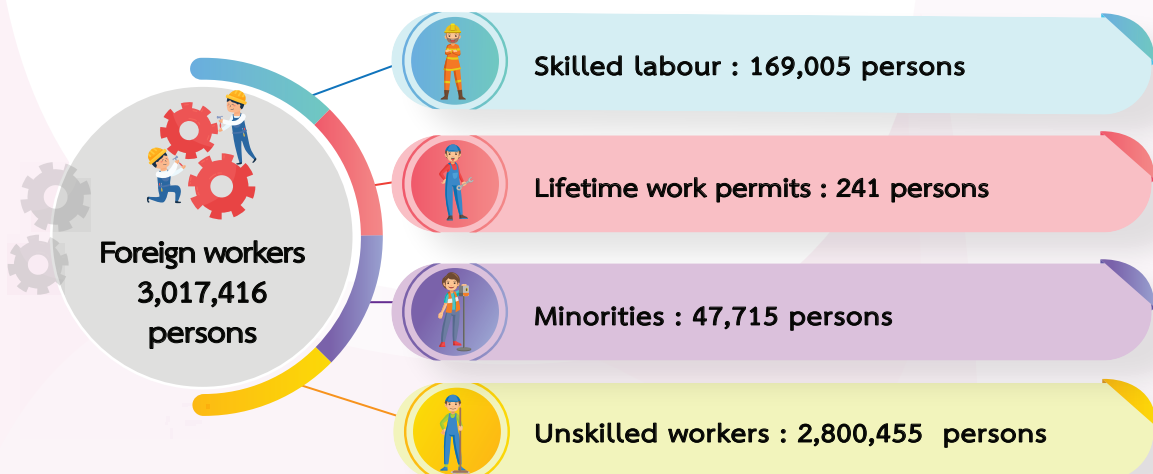


Source : Overseas Employment Administration Division

Labour Immigration : Foreign Workers

As of December 2019, there are 3,017,416 foreign workers in Thailand. General worker is the biggest group with 2,800,455 workers of 92.81%. Skilled foreign workers contributed to 169,005 or 5.60% of Minorities/ Highlander/ Lifetime work permits to 47,956 or 1.59%

Current Foreign workers



Source : Foreign Workers Administration Office