



Thai Labour Market Journal

Vol. No. 28 Issue No.3 March 2020



- ➔ 37.63 million employed persons, a decrease of 1.5 hundred thousand persons compared to the same period last year.
- ➔ 4.19 hundred thousand unemployed persons, an increase of 1.19 hundred thousand persons compared to the same period last year.
- ➔ 22,966 Job Vacancies are available in Thailand.



<https://doe.go.th/lmia>

CONTENTS

- 1 Labour Force
- 2 Labour Demand
- 3 Labour Emigration
- 4 Labour Immigration

Editor
Director : Director of Labour Market Information
Administration Division
Writers : Analysis and Research Group
Translators : Labour Market Administrative Record Center

Editorial

Thai Labour Market situation as of February 2020 according to DOE statistic, there are 22,966 job vacancies, increased by 8.87% from the previous month. The statistic of employed persons is 37.63 million persons decreased by 0.40% and unemployed persons is 4.19 hundred thousand, increased by 39.67% compared to the same period last year. Unemployment rate is 1.1%

Please follow the further information at <https://doe.go.th/lmia> or Facebook at Thai Labour Market Information.



Labour Market Information
Administration Division



Thai Labour Market
Information



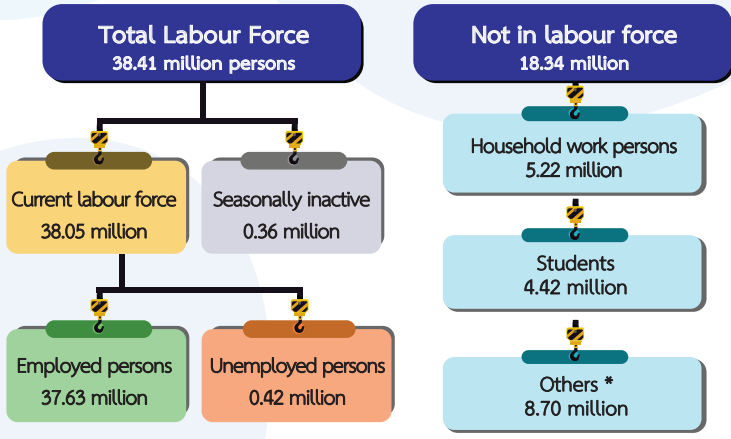
doe.go.th/lmia

Labour Force : Thai Labour Force Survey

Statistic of the National Statistical Office as of February 2020 shows that the country's total population 56.75 million are aged 15 and over, of these 38.41 million are in labour force, 37.63 million are employed and 0.419 million are unemployed (unemployment rate of 1.1%) and 0.360 million are seasonally inactive labour force.

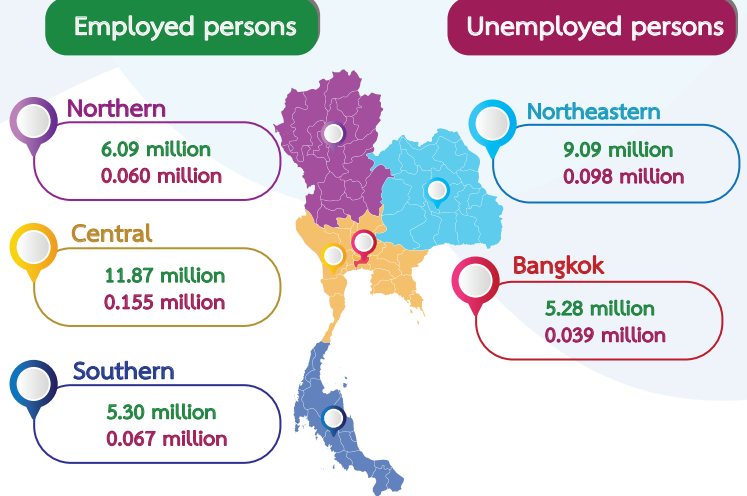
Number of Population by labour force (February 2020)

Aged 15 and over 56.75 million persons



* (Children, Elderly, Disability etc.)

Employed and Unemployed persons by region



Employed persons 37.63 million, decrease by 0.150 million

February 2019 : 37.78 million persons -0.40%
January 2020 : 37.18 million persons 1.21%

Unemployed persons 0.419 million, (1.1% of unemployment rate)

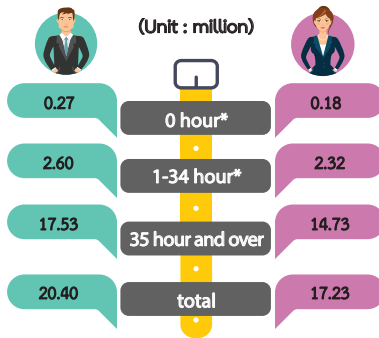
February 2019 : 0.300 million persons 39.67%
January 2020 : 0.406 million persons 3.20%

Agricultural
10.52 million persons

Non-Agricultural
27.11 million persons

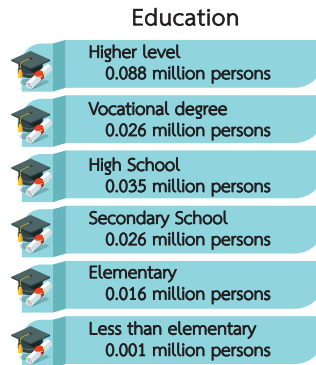


Working hours per week by sex



Note : For those who have a full time job but not working in the survey period

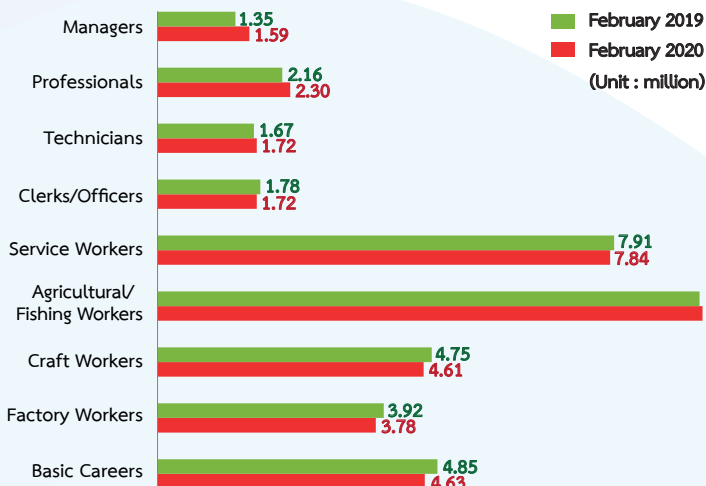
Without working experiences 0.176 million persons



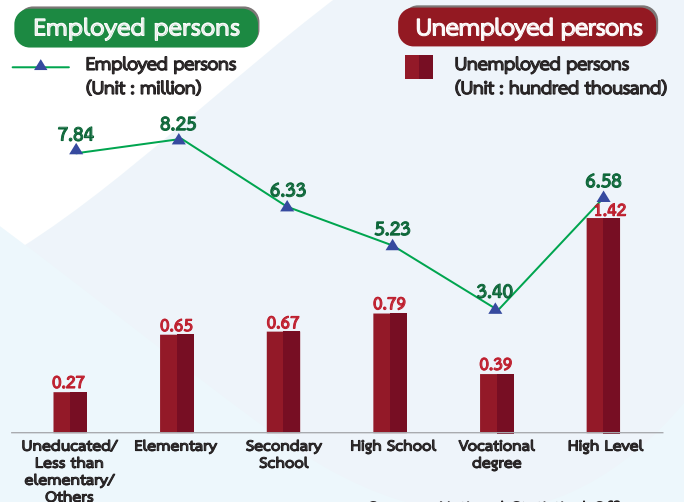
Having working experiences 0.230 million persons



Employed persons by occupational group



Education



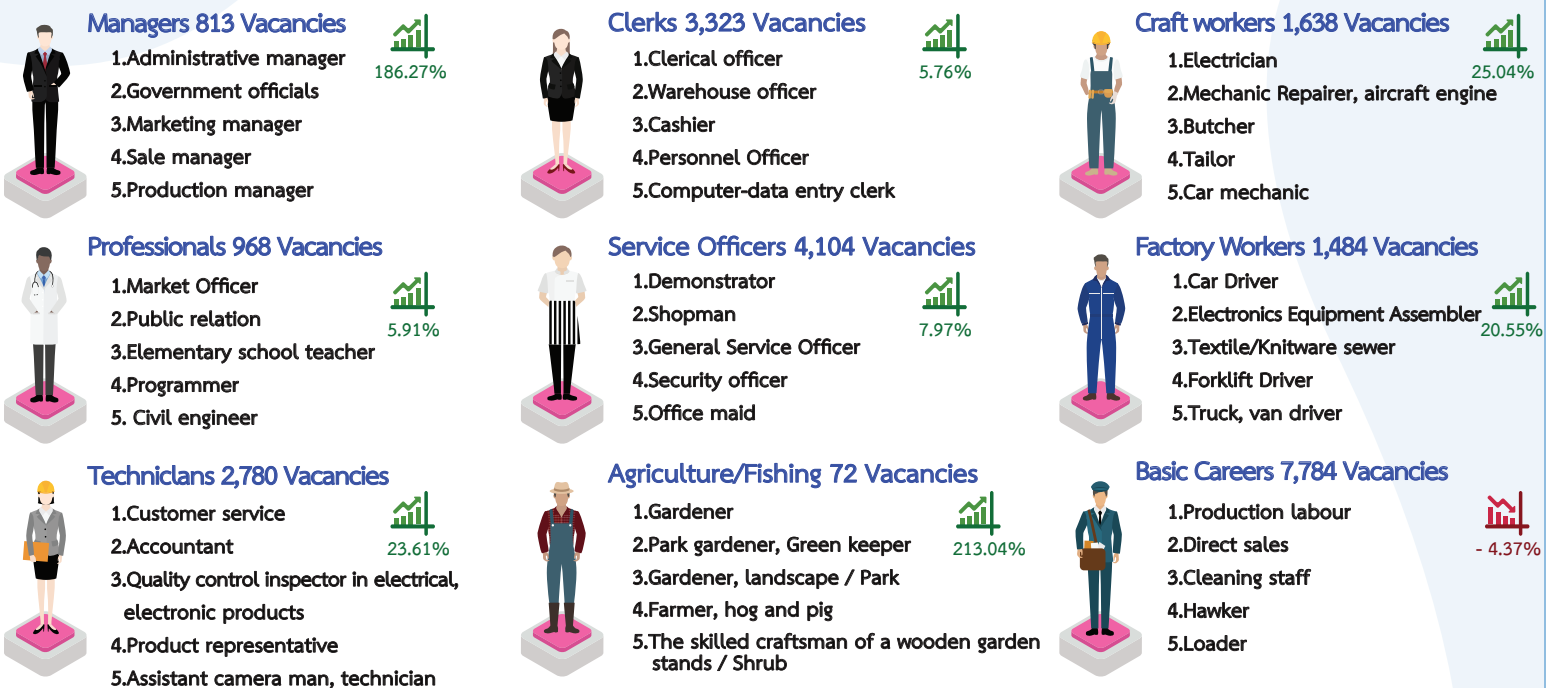
Source : National Statistical Office

Labour Demand : Domestic Labour Demand (DOE)

In February 2020, there are 22,966 Job vacancies from 345 companies requested through the recruitment service of Department of Employment (DOE). The highest demand is 8,430 persons (36.71%) in Vocational degree followed by 7,654 persons (33.33%) in Secondary School level and 4,010 persons (17.46%) in Primary School level and the lowest demand is 2,872 persons (12.50%) in Post Graduate level.



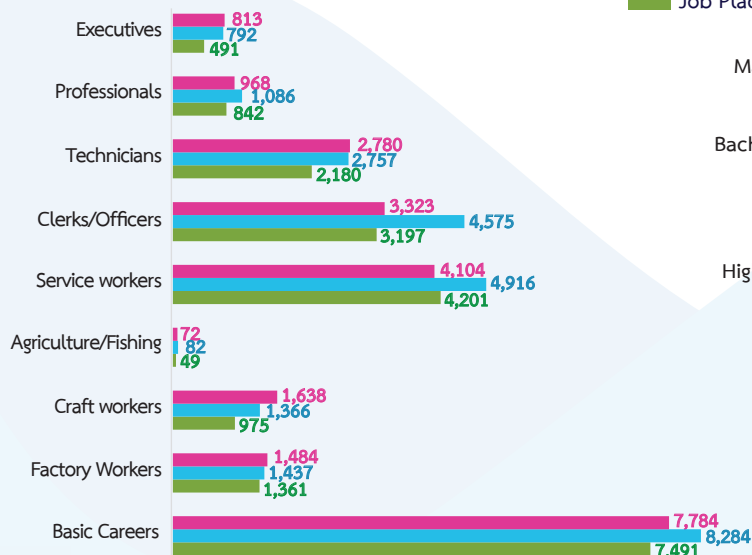
Top 5 job vacancies among occupation groups



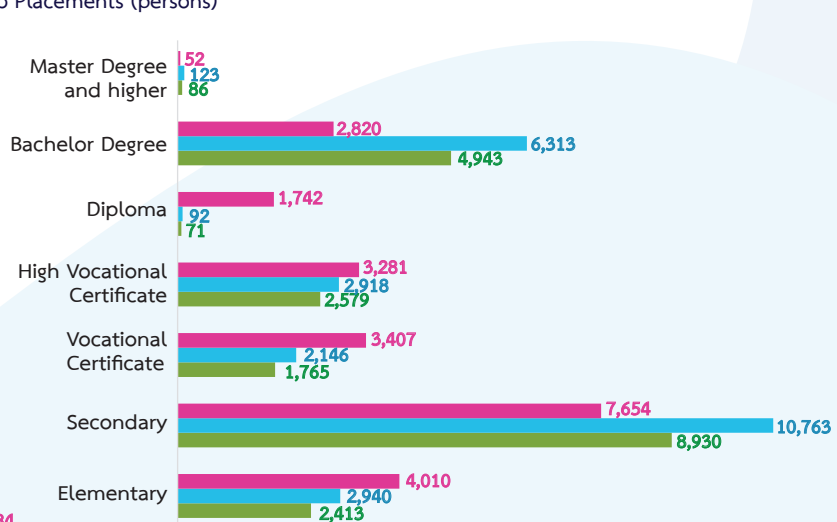
Remark : These are the increase of decrease of labour demand in various groups compared with the previous month.

Job Vacancies, Job Seekers and Job Placements

Classification by Job



Classification by Education



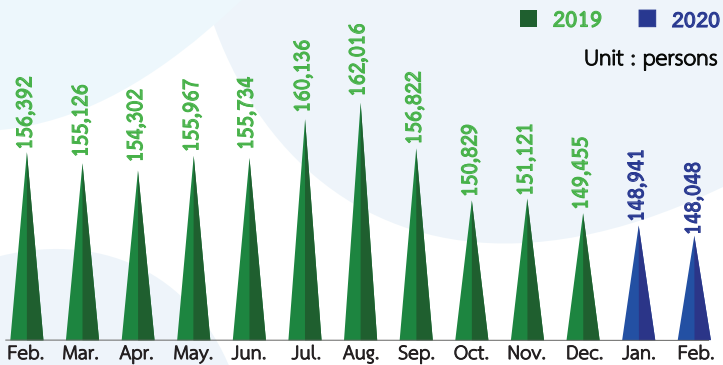
Source : Department of Employment

3

Labour Emigration : Thai workers working oversea

In February 2020, there are 148,048 Thai workers working oversea. The top 3 countries of destination are Taiwan, Israel and Korea and the most required jobs are Labourers, Production Labours and Agricultural workers.

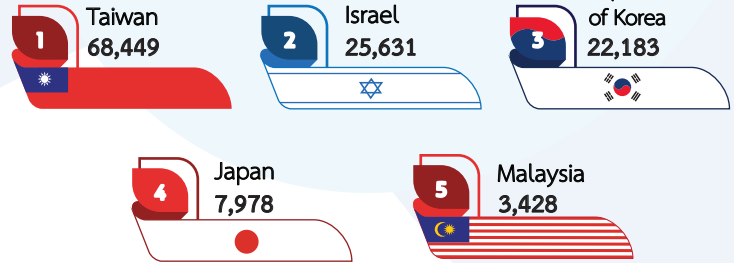
Thai workers working oversea



February 2019 : 156,392 persons.
February 2020 : 148,048 persons. -5.34%

Top 5 Countries of Destination

Unit : persons



January 2020 : 148,941 persons.
February 2020 : 148,048 persons. -0.60%

Top 5 Countries of Destination in various Continents



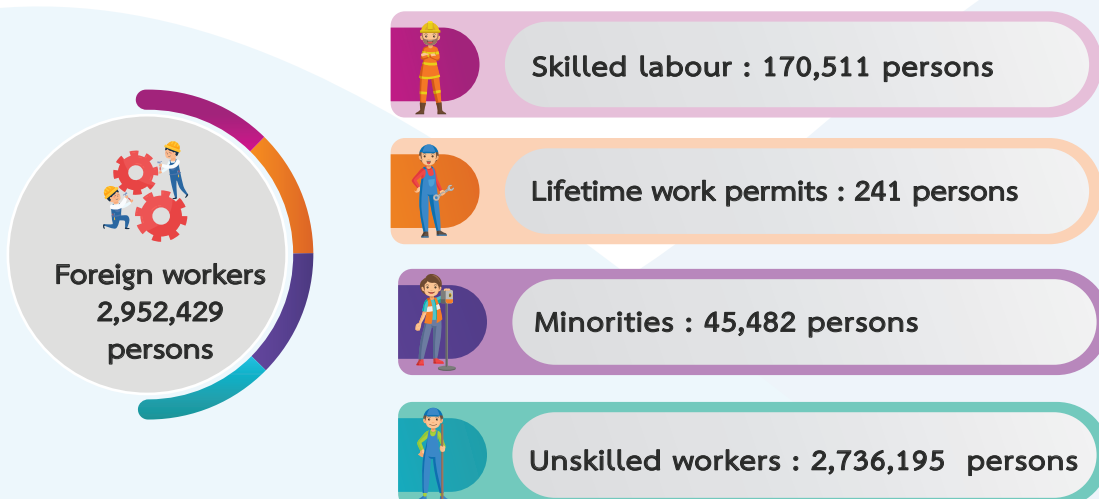
Source : Overseas Employment Administration Division

4

Labour Immigration : Foreign Workers

As of February 2020, there are 2,952,429 foreign workers in Thailand. General worker is the biggest group with 2,736,195 workers of 92.68%. Skilled foreign workers contributed to 170,511 or 5.78% of Minorities/ Highlander/ Lifetime work permits to 45,723 or 1.55%

Current Foreign workers



Source : Foreign Workers Administration Office