

-  In November 2022, there were 38,829 positions of Labour Demand.
-  Thai workers working oversea has increased by 3.2 times (YoY).
-  There were 39.82 million employed and 4.65 hundred thousand unemployed persons.
-  The insured persons who registered unemployment via DOE were 73,064 persons.

CONTENTS

- 1** Labour Demand
- 2** Labour Emigration
- 3** Labour Immigration
- 4** Labour Force
- 5** Registration of Unemployment Insurers

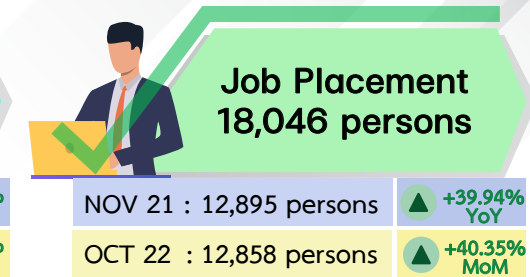
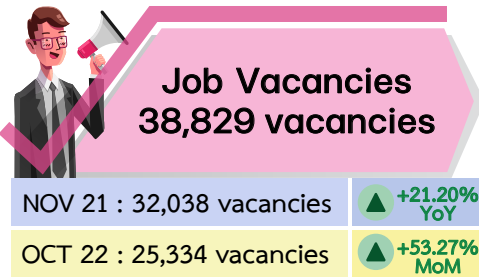
Editorial

The Thai Labour Market Situation in November 2022, there were 39.82 million employed, 4.65 hundred thousand unemployed persons and 73,064 insured persons who registered unemployment via DOE. The majority cause of unemployment was resignation (80.36%). Furthermore, employers/companies reported their labour requirement via DOE about 38,829 job vacancies. Thai workers working overseas has increased by 3.2 times (YoY) and foreign workers working in Thailand has increased by 24.20%.

Please follow the further information at
Website : <https://www.doe.go.th/prd/lmia>
Facebook : Thai Labour Market Information

1. Labour Demand : Domestic Labour Demand (DOE)

In November 2022, 132 employers/companies reported their labour requirement via DOE about 38,829 job vacancies. The highest demand was 14,891 persons at the vocational level (38.35%), followed by 12,580 persons at the secondary level (32.40%), 6,196 persons at the primary level (16.39%), and 5,162 persons at the bachelor's degree and higher (13.29%).



Top 5 Labour Demand among Occupation Groups

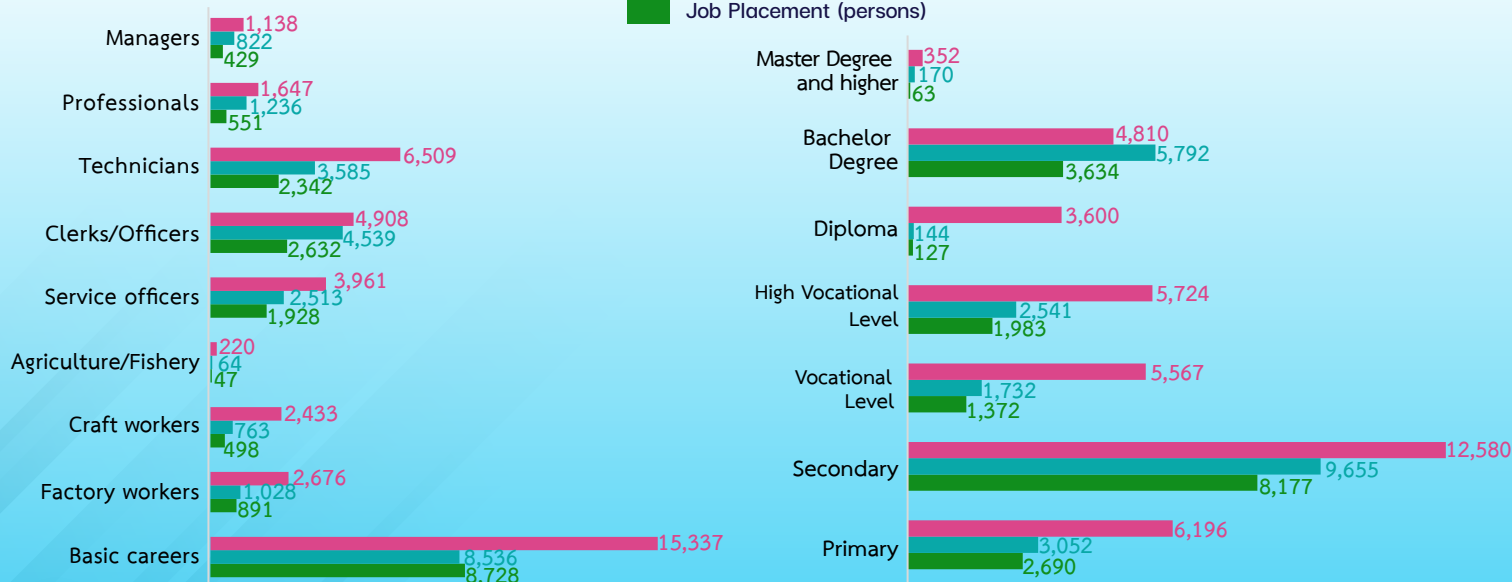


Job Vacancies, Job Seekers and Job Placements

Classified by Occupation Group

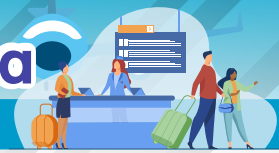
Labour Demand (vacancies)
Job Seekers (persons)
Job Placement (persons)

Classified by Education



Source : DOE Data Center

2. Labour Emigration : Thai workers working oversea

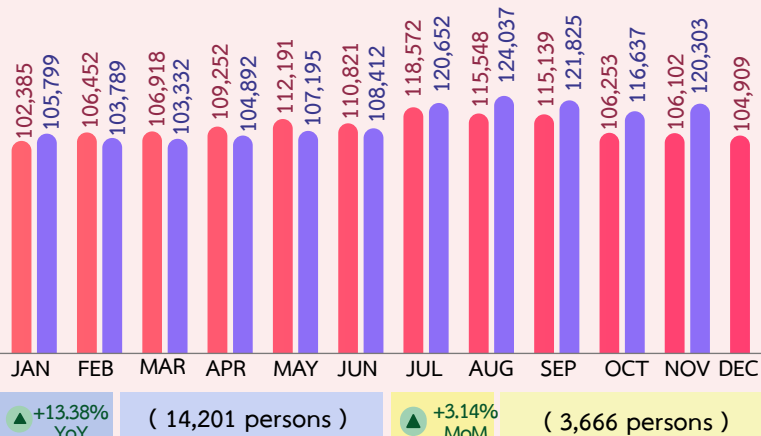


In November 2022, there were 120,303 Thai workers working oversea. The top 3 countries of destination are Taiwan, Israel and Republic of Korea. The most required job is basic careers: agricultural workers, general labourers and Metal product manufacturing workers.

There were 8,521 job seekers who are permitted to go oversea for employment. It was classified as 5 channels of overseas employment (5,620 persons) and RE-ENTRY (2,901 persons). Most channel was RE-ENTRY; 2,901 persons (34.05%) and most job was elementary occupations: 2,212 persons (25.96%).

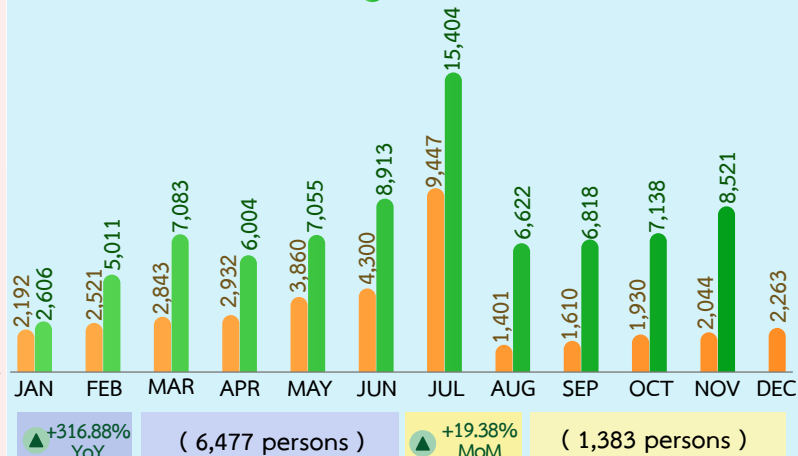
Thai workers working oversea

● 2021 ● 2022 Unit : Person



Permission to work oversea

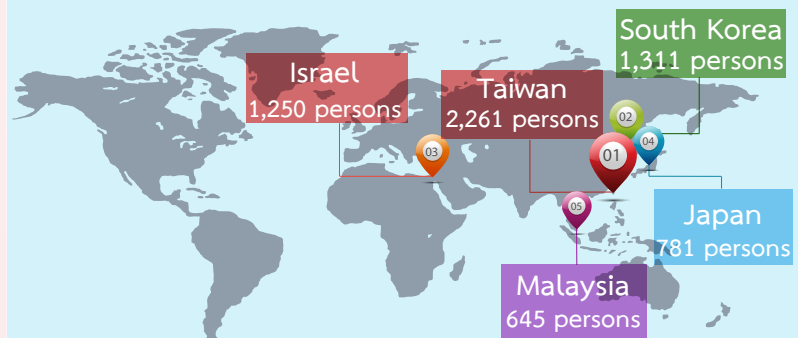
● 2021 ● 2022 Unit : Person



Top 5 Countries of Destination

	1. Taiwan	50,144 persons
	2. Israel	21,284 persons
	3. Republic of Korea	14,396 persons
	4. Japan	8,062 persons
	5. Malaysia	3,475 persons

Top 5 countries where Thai workers are permitted to work



Classified by Continents

Asia

1. Taiwan
2. Republic of Korea
3. Japan
4. Malaysia
5. Singapore

Middle East

1. Israel
2. UAE
3. Qatar
4. Kuwait
5. Bahrain

Europe

1. Finland
2. Sweden
3. Portugal
4. Hungary
5. Russia

North & South America

1. USA
2. Canada
3. Greenland
4. Trinidad and Tobago
5. Columbia

Africa

1. Madagascar
2. South Africa
3. South Sudan
4. Morocco
5. Mozambique

Australia & Ocenia

1. New Zealand
2. Australia
3. Papua New Guinea
4. Samoa
5. Fiji

Classified by Channels of Oversea Employment



Classified by Classification of Occupations



Source : Overseas Employment Administration Division

3. Labour Immigration : Foreign Workers

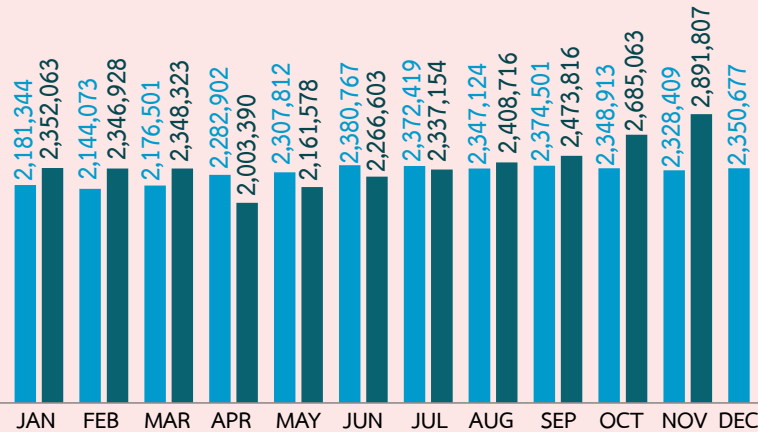


As of November 2022, there were 2,891,807 foreign workers in Thailand. It consisted of 2,642,069 of general workers (Burmese, Laotian, Cambodian and Vietnamese) (91.36%), 158,209 of skilled foreign workers (5.47%) and 91,529 of minorities/highlanders/lifetime worker permits (3.17%).

New foreign workers who are permitted to work in November 2022 were 14,719 positions. It can be classified by type of work permits: 6,415 positions of General type (43.58%), 5,441 positions of Daily or Seasonal workers (36.97%), 1,809 positions of Minorities group (12.29%), and 1,054 positions of BOI (7.16%).

All Foreign Workers

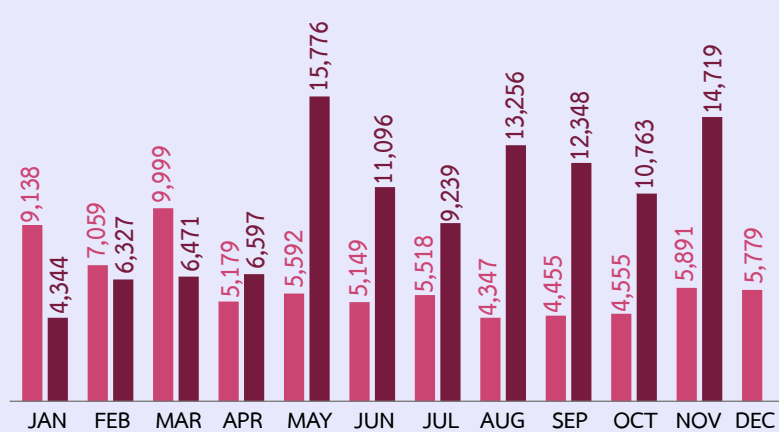
● 2021 ● 2022 Unit : Person



▲ +24.20% YoY (563,398 persons) ▲ +7.70% MoM (206,744 persons)

New Foreign Workers

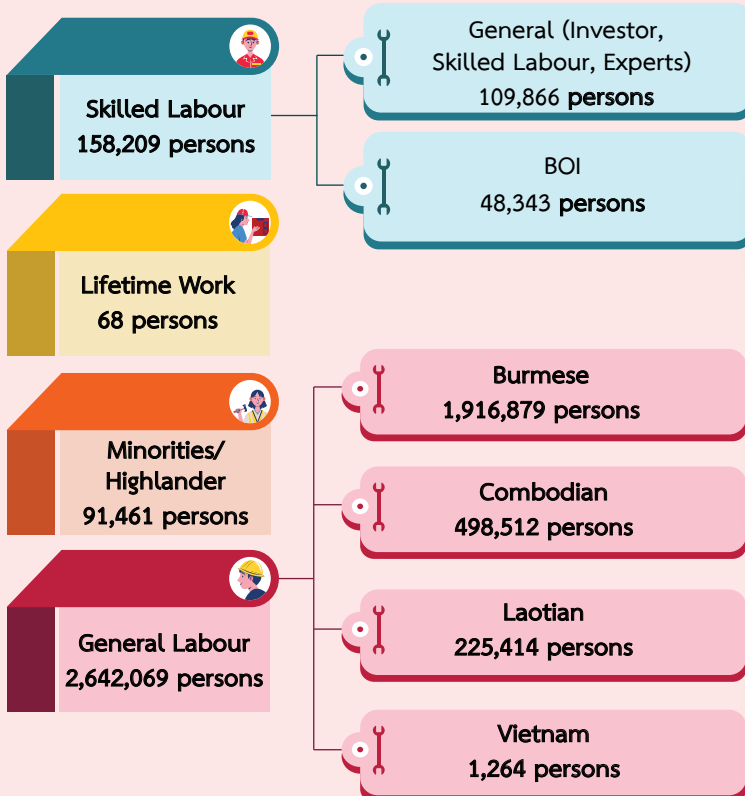
● 2021 ● 2022 Unit : Position



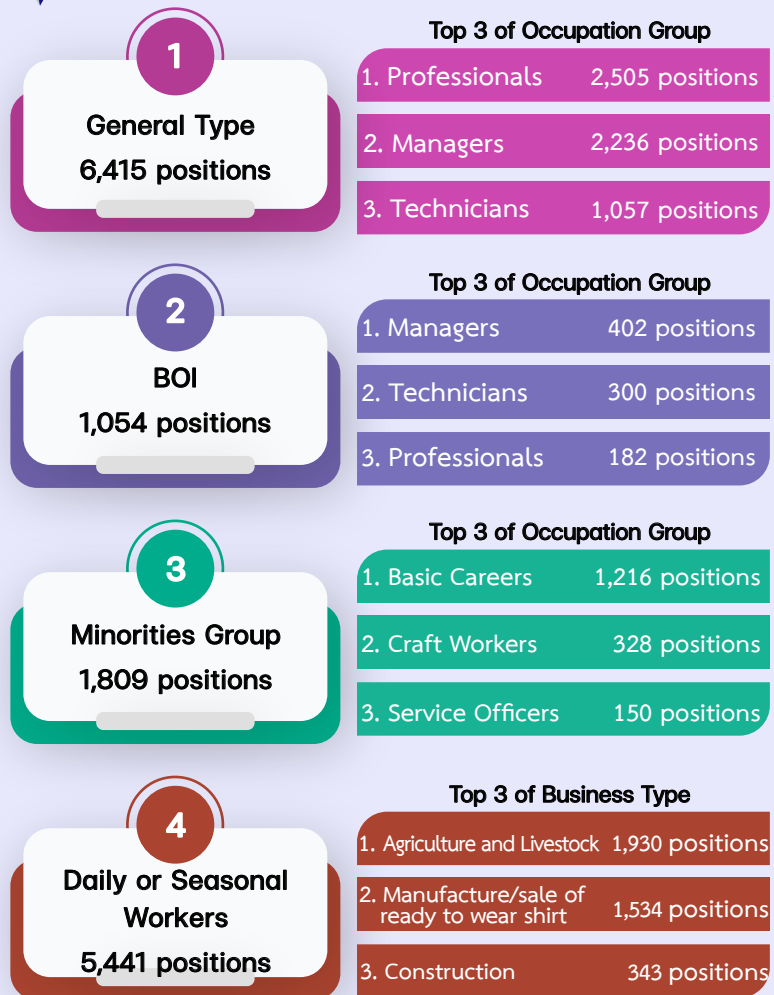
▲ +149.86% YoY (8,828 positions) ▲ +36.76% MoM (3,956 positions)

Current Foreign Workers classified by Groups

Foreign Workers
2,891,807 persons



New Foreign Workers



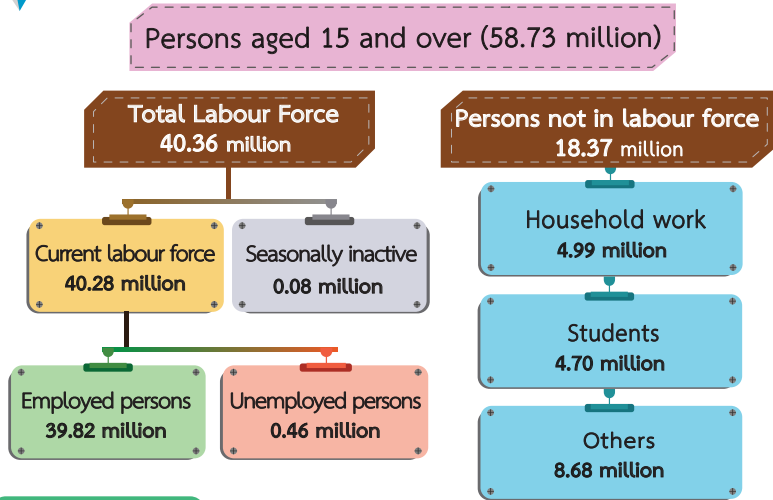
Source: Foreign Workers Administration Office

4. Labour Force : Thai Labour Force Survey

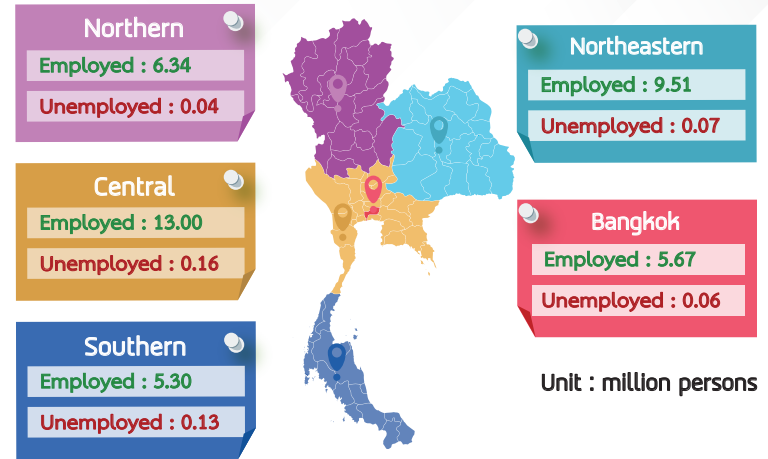


According to the National Statistical Office survey in November 2022, there were 58.73 million persons aged 15 and over. The 40.36 million were in the labour force; 39.82 million persons were employed, 4.65 hundred thousand persons were unemployed (a 1.2 percent unemployment rate), and 7.8 ten thousand persons were seasonally inactive labour force.

Number of Population by Labour Force (NOV, 2022)



Employed and Unemployed Persons classified by Region



Employed Persons

(39.82 million)
increased by 0.62 million

+1.58% MoM
October 2022 : 39.20 million

Unemployed Persons

(0.46 million)
Unemployment rate 1.2%

-16.96% MoM
October 2022 : 0.56 million

Agriculture
12.34 million

Non-Agriculture
27.48 million

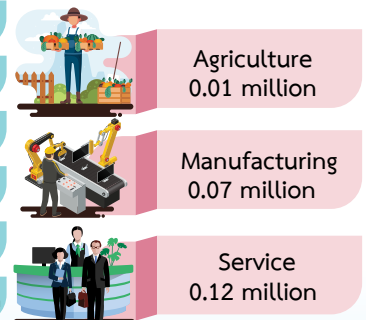
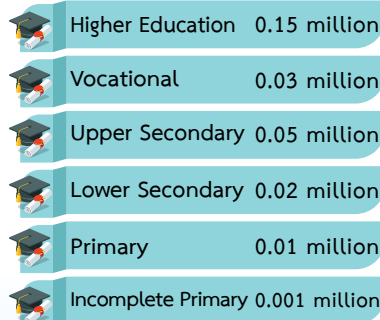
Top 6 Industries (Unit : million persons)



Without Working Experiences
0.27 million

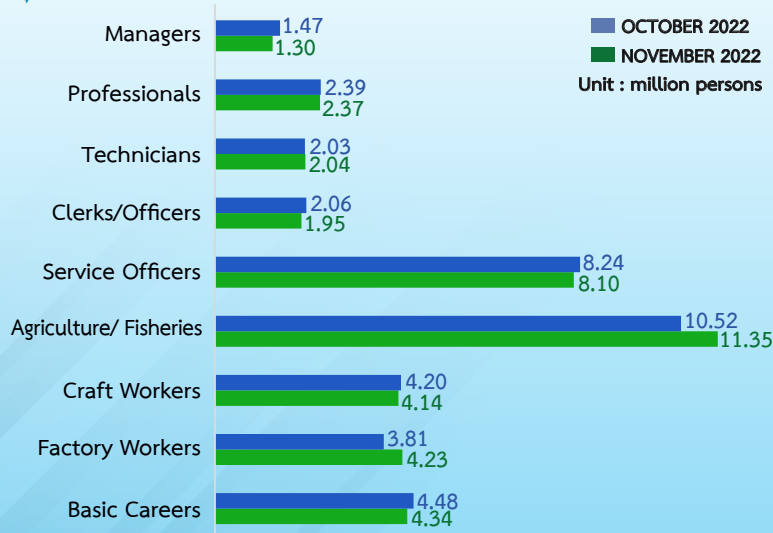
Having Working Experiences
0.20 million

Education Level

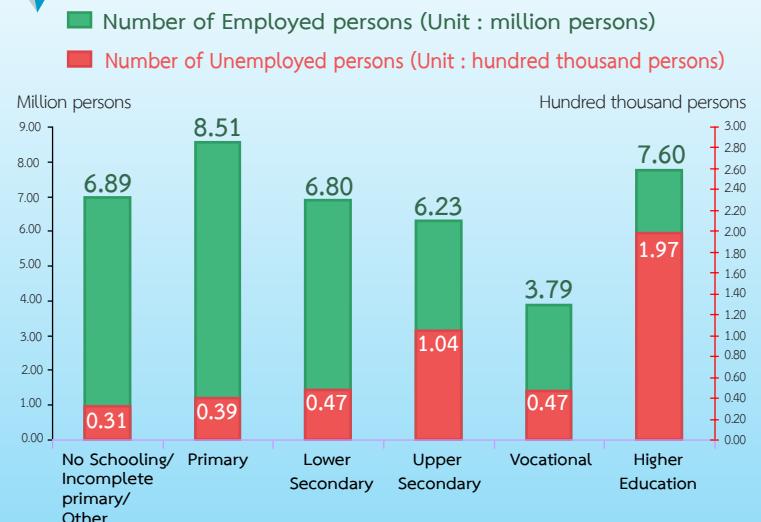


*Excluding other education and do not know the level of education.

Employed Persons classified by Occupation Group



Education Level



5. Registration of Unemployment Insurers



In November 2022, there were 73,064 registered insured persons in the case of unemployment via DOE. It has decreased from the previous month by 5,482 people (6.98%). It was made up of 31,151 males (42.64%) and 41,913 females (57.36%). The majority came from resignation (80.36%). The causes of resignation were changing jobs, being self-employed, respite, and sickness.

The Number of Registered Insured Persons in Case of Unemployment

NOVEMBER 2022 (73,064 persons)

80.36%



Resignation
58,712 persons



Female
33,183 persons
(56.52%)



Male
25,529 persons
(43.48%)

Causes of resignation

1.	Changing Jobs	29,981 persons
2.	Being Self-employed	18,043 persons
3.	Respite	6,427 persons
4.	Sickness	4,261 persons

15.68%



Laid off
11,460 persons



Female
7,063 persons
(61.63%)



Male
4,397 persons
(38.37%)

Causes of laid off

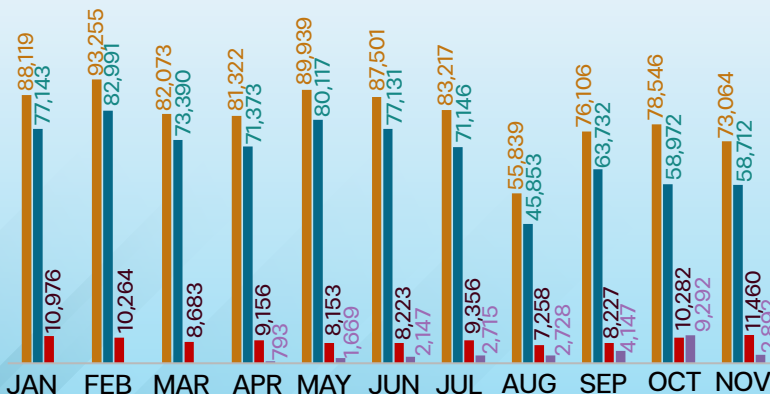
1.	Staff Reduction	6,453 persons
2.	Termination of Contract	3,522 persons
3.	Going out of Business	1,485 persons

* Remark : In November 2022, there were 2,892 persons end of contract (3.96%).

It was made up of 1,225 males (42.36%) and 1,667 females (57.64%).

The Number of Insured Persons in case of Unemployment Monthly, 2022

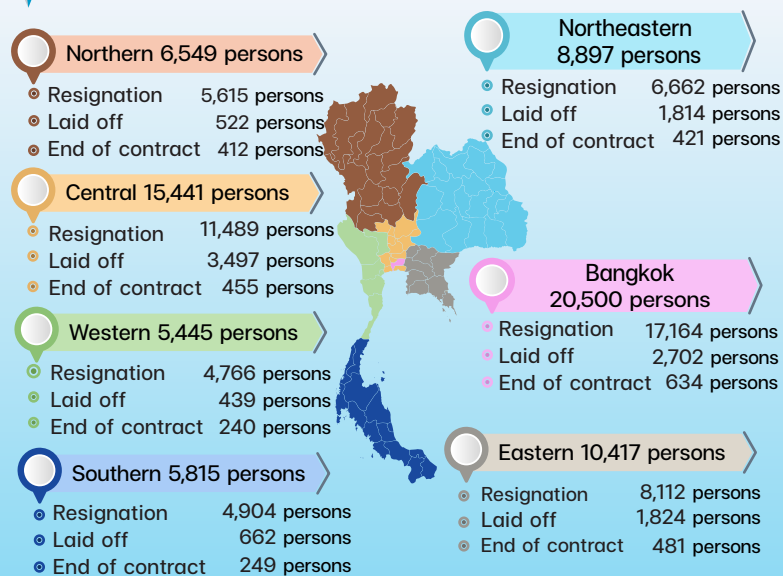
■ Total ■ Resignation ■ Laid off ■ End of contract
Unit : Person



-6.98%
MoM

(5,482 persons)

The Number of Insured Persons in case of Unemployment classified by Regions



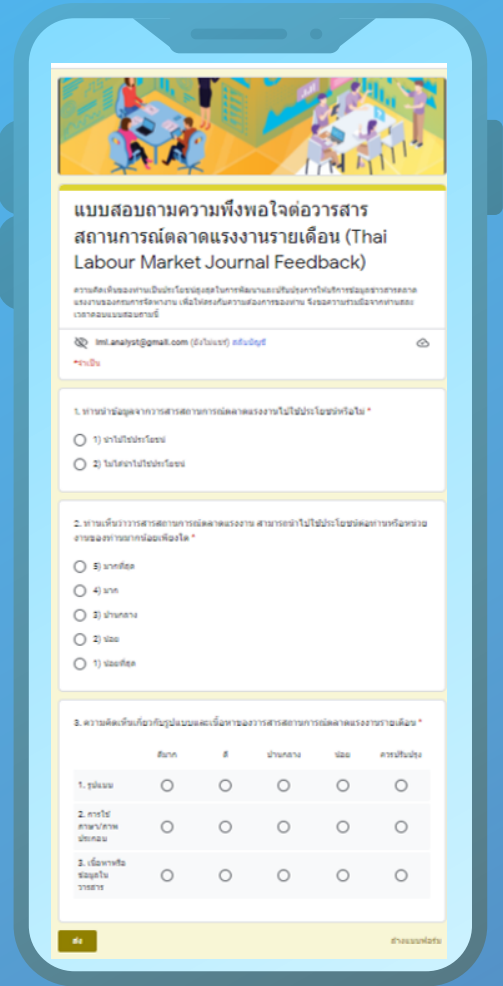
Source : DOE Data Center, Department of Employment, Ministry of Labour

Thai Labour Market Journal Feedback



SCAN

CLICK



Thai Labour Market Information

<https://www.doe.go.th/prd/lmia>

0 2246 7870 lmiofthailand@doe.go.th

Labour Market Information Administration Division,
Department of Employment
Mitmairi Road, Din Daeng District, Bangkok 10400

Organizers

Consultants

Phairoj Chotikasatien
Bunyawee Kwaipan
Santi Nantasuan
Sipmuenchai Pothisin

Director General of the Department of Employment
Deputy Director General of the Department of Employment
Deputy Director General of the Department of Employment
Deputy Director General of the Department of Employment

Authors

Suvakul Trirathpaladol
Kiattisak Thanala
Piyanooch Buapen
Nadsitang Phawadee
Ampawan Chaona
Saroat Phungneat
Thitima Ninpunk
Kornrawit Mitkaew
Angkana Wandao

Director of Labour Market Information Administration Division
Labour Specialist, Senior Professional Level
Labour Specialist, Professional Level
Labour Specialist, Practitioner Level
Labour Specialist
Labour Specialist
Labour Specialist
Statistician
Labour officer

Translator

Chariya Kithiranchai

Labour Specialist (English)

